

Safari Montage FAQ for CBSD

How do teachers log-in to Safari Montage?

1. Navigate to <https://safari.bucksiu.org>.
2. Select "Central Bucks School District" from the dropdown menu.
3. Enter your CBSD username (without the "ad\") and password.
4. Click "Log in". (See Figure 1)

Note: [Click here](#) to watch an introductory video about Safari Montage.

How do students log-in to Safari Montage?

Students follow the same directions as above using their CB log-ins. The log-in is NOT case sensitive.

Can Safari Montage videos be downloaded?

Yes. Some videos have the download icon as seen in **Figure 2**. You can search for videos that are downloadable by checking the "Downloadable" box.

Who are some of the key providers of Safari Montage?

This list displays some of the well-known providers:

- ✓ National Geographic
- ✓ ABC News
- ✓ PBS
- ✓ Disney
- ✓ School House Rock
- ✓ History Channel

Will Safari Montage work from home?

Yes. Safari Montage will work at both home and school by going to <https://safari.bucksiu.org>. Please click on [this link](#) to learn about browser settings. You will need to click on the **info highlighted in Figure 3** after you log-in to learn more.

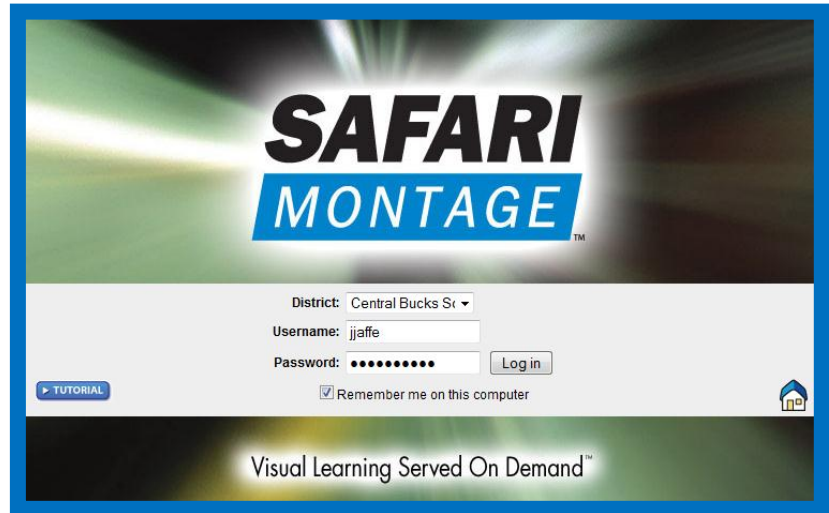


Figure 1

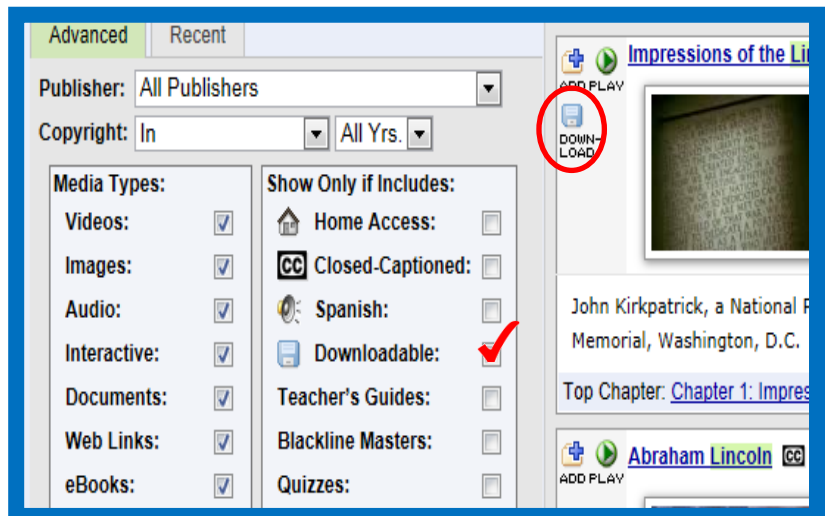


Figure 2

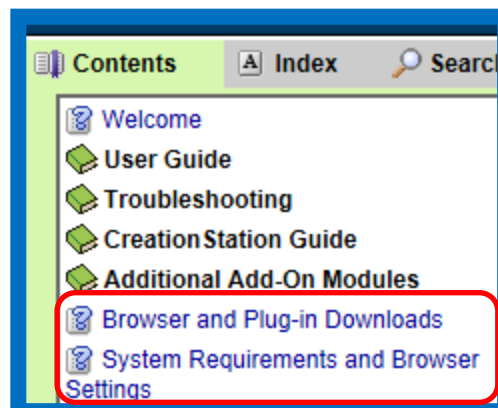


Figure 3

Safari Montage FAQ for CBSD

What types of media can I find on Safari Montage?

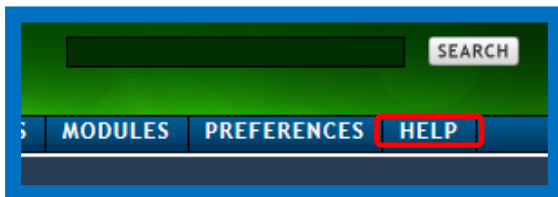
You will see in [Figure 4](#) that there are a variety of media types found in Safari Montage. It is also easy to find quizzes and teacher guides to correlate with each media type.

How do I perform a search?

After you log-in, you can click on the [Search](#) button and type in the [Keyword](#) you are searching. [See Figure 5](#). To watch a video about how to use all of the search features, please [click here](#).

Where can I find help with using Safari Montage?

Tutorials about all of the main features of Safari Montage can be [found here](#). Also, general information about using this website can be found on the Help Icon on the top right corner of the site. [This link](#) is a shortcut to the content. You will have to log-in to view the page.



Who should I contact with questions?

For log-in issues please call or email the Help Desk.

267-893-2100
helpdesk@cbsd.org



Contact the Staff Development department or your school librarian with integration ideas or questions about how to use the Safari Montage website.

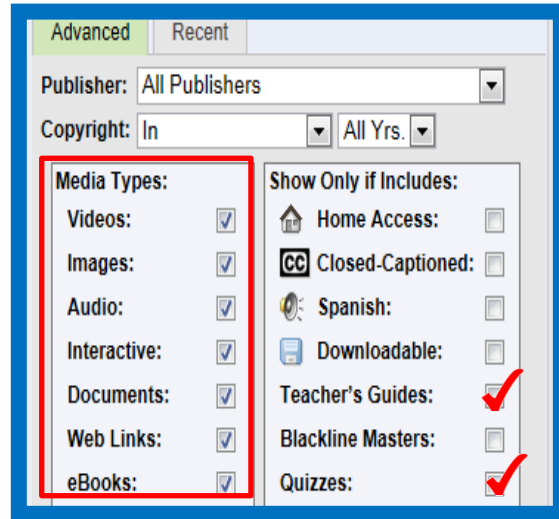


Figure 4

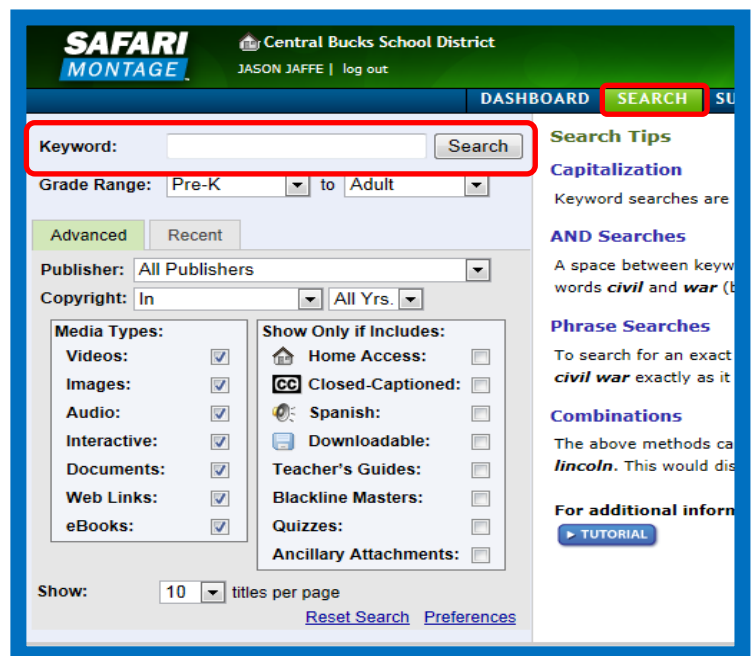


Figure 5